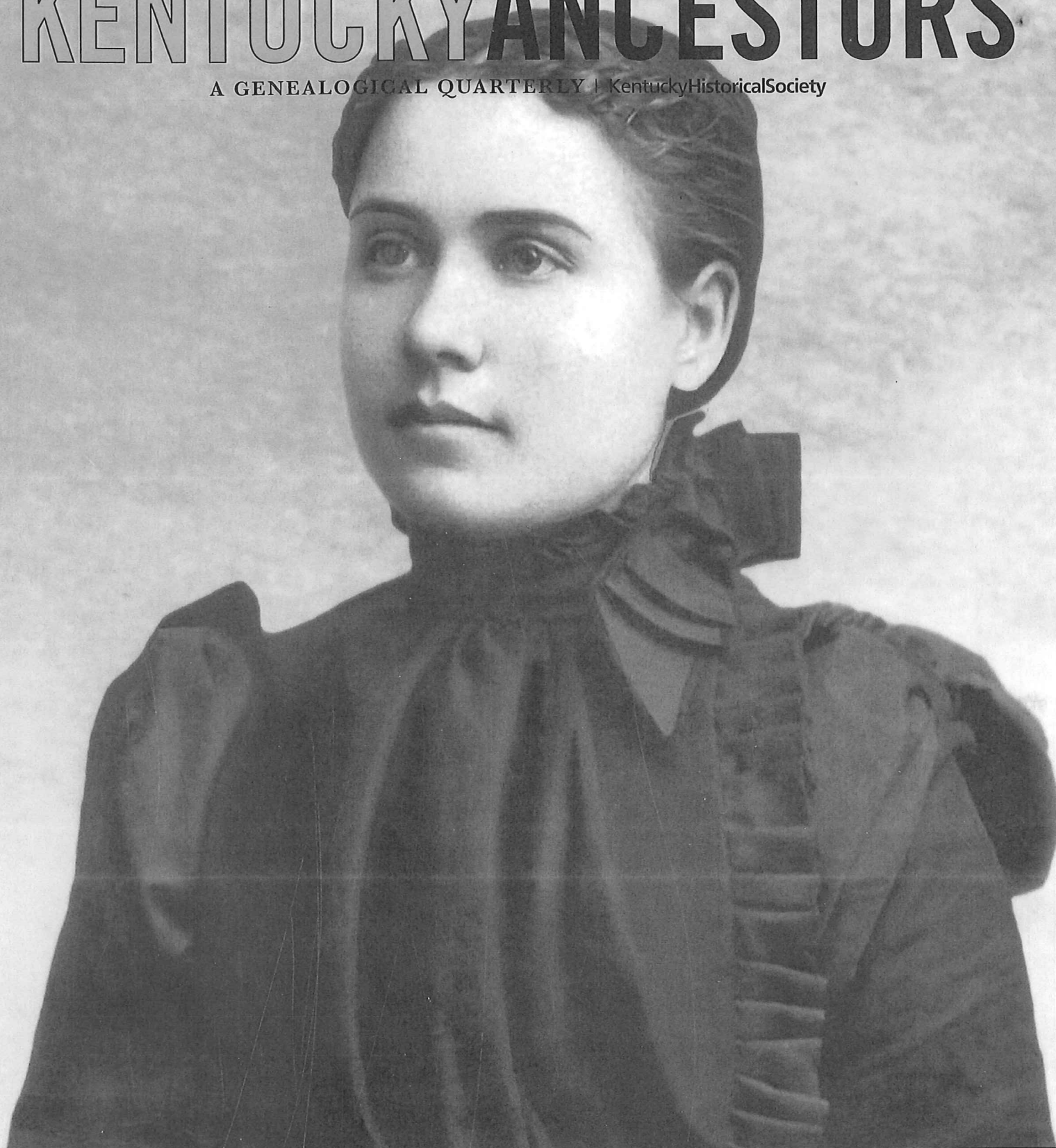


KENTUCKY ANCESTORS

A GENEALOGICAL QUARTERLY | KentuckyHistoricalSociety



Volume 44, No. 2
Winter 2008

From Kentucky Roots to Texas Homesteads (1828-2008):
John S. Baugh, Lucy J. Gillum, and Their Descendants

Kentucky Civil War Genealogy Research Sources

Using the Kentucky Historical Society's Digital Collections

The Kentucky Secretary of State's Land Office "Virginia & Old Kentucky Patents" Web site

Kandie P. Adkinson

Administrative Specialist, Land Office Division

The sixth in a series of articles regarding the Internet availability of Kentucky Land Office records.

The first question asked by the majority of the visitors to the Kentucky Land Office is "May we see a survey by Daniel Boone?" It doesn't matter if the clients are researching patents involved in mineral acquisition or if they are filing city annexations, the "oohs" and "ahs" are the same when original documents from the 1700s are on display. Over the years we have observed their reactions are consistent. Historians and genealogists examine the plats and descriptions in quiet reverence; surveyors seem a little prouder to share Boone's profession. (We have lost count of the number of times we have heard surveyors say "The man himself did that.")

On 10 May 2008, Daniel Boone and Kentucky's earliest settlers entered a new frontier called cyberspace. During a monthly seminar hosted by the Kentucky Historical Society and Kentucky Genealogical Society, Secretary of State Trey Grayson announced color scanned images for over 17,300 patent files in the "Virginia and Old Kentucky Patent Series" had been added to the Land Office website. Wills, Caveats, Unused Warrants, and Unfinished Patents were also added under separate channels. The doors leading to Kentucky's Land Office treasures are now open to the world!

There are two ways to access the "Virginia & Old Kentucky Patents" website.

1. Open <http://www.sos.ky.gov/>, then click the "Land Office" header. On the Land Office home page you will see links to a Power Point program presented at the 10 May 2008 meeting of KHS/KGS. Supplemental notes corresponding to the program are also linked. Secretary Grayson's formal announcement regarding the new website is available for viewing. Research options are listed at the left on the homepage.

Click "Non-Military Registers & Land Records," <http://www.sos.ky.gov/land/nonmilitary/>. Overview summaries are provided for information under the "Non-Military" channel.

Over sixty wills may be accessed from the "Overview" page by opening "Wills" at <http://www.sos.ky.gov/land/nonmilitary/wills/>. (Note: As additional wills are located in patent files they will be added to the "Wills" website.)

Patent files that have been scanned for Internet presentation are available under "Patent Series," <http://www.sos.ky.gov/land/nonmilitary/patentseries/>. The first patent grouping is "Virginia Patent Series & Old Kentucky Patent Series." First-time visitors to the site are encouraged to resist opening the "Click here to start the search" function in the middle of the page. By opening <http://www.sos.ky.gov/land/nonmilitary/patentseries/vaky/> in the left column of the "Patent Series" opening page, researchers can

KHS ORIGINAL VOL. SURVEY NO.	ORIGINAL NO.	NAME	ACREAGE	COUNTY	WATERCOURSE	SURVEY DATE	ORIGINAL BOOK & PAGE	GRANTEE	GRANT DATE	ORIGINAL BOOK & PAGE
2	482	Madison, Thomas	924	Kentucky	Harrade Run	10-29-1780	1 224	Same & Heirs	6-1-1782	1 471-472
11	2632	"	1,000	Lincoln	Hannon Cr.	3-17-1784	3 401	Patrick Henry & Heirs	5-23-1786	2 403-404
20	4850	"	1,000	Fayette	Unknown cr. Ohio R.	4-4-1785	6 152-153	Charles Patterson & Heirs	8-14-1786	8 404-405
26	6406	"	2,000	Lincoln	Dicks R.	11-12-1785	8 29	Same & Heirs	8-30-1787	13 281-282
26	3948	Madison, William	1,000	*Fincastle	Floyd Cr.	6-4-1775	5 65-66	Same & Heirs	12-1-1779	6 21-22
37	9409	"	2,000	Military & Jefferson	Clear, Bullekin & Bra-shear Cr.	4-13-1785	11 474	Susanna Smith Madison & Agatha Strother Madison & Their Heirs	4-23-1792	16 211-212
9	2110	Madison, William Strother, Heirs of	1,000	Jefferson	Fern Cr.	2-20-1783	3 93	Susanna Smith Madison & Agatha Strother Madison & Their Heirs	5-15-1784	6 60-61
14	3407	McGary, Hugh	400	Lincoln	Shawnee Run	10-16-1780	4 319-320	Hugh McGary & Heirs	12-20-1785	8 45-46
14	3408	"	175	Lincoln	Shawnee Run	10-16-1780	4 319-320	Hugh McGary & Heirs	12-20-1785	8 46-47
25	6320	Mains, Francis	600	Military	Green R.	1-12-1785	7 533	Thomas Wilson & Heirs	9-7-1788	13 456-457
37	9387	Majors, John	1,000	Fayette	Unknown cr. Elkhorn	12-15-1783	11 459-460	Same & Heirs	6-14-1786	3 303-304
15	3700	Mallery, Roger	500	Fayette	None	1-28-1785	4 361-362	Same & Heirs	8-14-1786	6 424-425
34	8465	Mallery, Uriel - See 3700, Craig, Lewis & Uriel Mallery	2,000	Fayette	Main Fk. Elkhorn & Kentucky R.	11-19-1788	10 351-352	Same & Heirs	5-1-1792	16 208-209
34	8466	"	242	Fayette	Unknown	3-21-1789	10 352-354	Same & Heirs	4-30-1792	16 204-205
34	8467	"	140	Fayette	Unknown	3-21-1789	10 352-354	Same & Heirs	4-30-1792	16 206-207
34	8468	"	600	Fayette	Unknown	3-21-1789	10 352-354	Same & Heirs	4-30-1792	16 205-206
34	8469	"	2,320 3/4	Fayette	Bank Lick Cr.	3-20-1789	10 354-355	Same & Heirs	5-1-1792	16 207-208
12	3018	Mallery, Uriel	2,320 3/4	Fayette	Bank Lick Cr.	3-12-1784	4 90	Same & Heirs	12-2-1785	12 422-423
2	279	Mallery, Uriel - See 279, Craig, Lewis & Uriel Mallery	"	"	"	"	"	"	"	"
2	280	" - See 280, Craig, Lewis & Uriel Mallery	"	"	"	"	"	"	"	"
2	293#1	" - See 293#1, Craig, Lewis & Uriel Mallery	"	"	"	"	"	"	"	"
2	293#2	" - See 293#2, Craig, Lewis & Uriel Mallery	"	"	"	"	"	"	"	"
4	940#1	" - See 940#1, Craig, Lewis & Uriel Mallery	"	"	"	"	"	"	"	"
4	940#2	" - See 940#2, Craig, Lewis & Uriel Mallery	"	"	"	"	"	"	"	"
1	63	Manfee, Garrod	400	Lincoln	Cedar Cr.	5-2-1782	1 35	Same & Heirs	12-1-1782	4 58-59
33	8349	Manfee, Garrod	400	Lincoln	Cedar Cr. Dicks R.	7-9-1781	10 262	Same & Heirs	10-27-1789	12 309-310
4	826	Manfield, William	200	Lincoln	Cedar Cr.	2-17-1781	1 399	Same & Heirs	1-8-1784	2 41-42
3	638	Manfifee, William	400	Kentucky	Dicks R. & mouth of Cedar Cr.	5-15-1780	1 293-294	William Manfifee & Heirs	9-1-1782	1 589-590
37	9241	Hanning, Nathaniel	500	Jefferson	Harrod Cr.	1-26-1784	11 368	+Caveated	6-1-1782	1 14
26	4556	Manson, Peter	1,000	Jefferson	Rolling Fk.	7-21-1781	1 214	Same & Heirs	9-21-1787	12 82-83
37	6111	"	1,089	Fayette	Hickman & Jessamine Cr.	10-6-1785	8 32-33	Same & Heirs	9-21-1787	12 59-60
26	6421	"	1,500	Fayette	Lees Lick Cr.	6-9-1785	8 39	Same & Heirs	5-18-1786	7 386-387
14	3450=	Marie, John, James Reynolds, Moses Bartram, Dr. Benjamin Lay & William Forbes	61,958	Lincoln	Br. of Goose Cr.	6-25-1784	4 348-350	James Reynolds & Heirs	5-18-1786	7 386-387
14	3452=	Marie, John, James Reynolds, Moses Bartram, Dr. Benjamin Lay & William Forbes	61,958	Lincoln	Br. of Goose Cr.	6-25-1784	4 348-350	James Reynolds & Heirs	5-18-1786	7 386-387
29	7156	Markham, Bernard	13,122	Fayette	Eagle Cr.	2-23-1785	8 520	Same & Heirs	1-28-1787	11 16-17
26	6578	Markland, William	740	Bourbon	Euston Fk.	3-2-1787	8 117-118	John Grant & Heirs	1-15-1789	13 525-526
19	4560	Markes, Isiah	1,000	Military	Highland Cr.	1-12-1785	5 445	Josiah Markes & Heirs	9-17-1787	13 403-404
19	4558#2	Markes, Isiah	1,000	Military	Tradewater	5-23-1785	5 444	Same & Heirs	9-17-1787	13 233-234
19	4558#1	Markes, Capt. Isiah	1,000	Military	Ohio R. & Highland Cr.	11-17-1784	8 31-32	Same & Heirs	9-17-1787	13 220-221
26	6409	Markes, Isiah	1,000	Military	Tradewater	5-23-1785	5 443-444	Josiah Markes & Heirs	9-17-1787	13 402-403

* Grant gives Kentucky County
+ Caveat - a warning preventing someone else from settling on your property until the general court shall have a chance to hear evidence from both sides.
= Duplicate Surveys

RESEARCHING THE "MASTER INDEX: VIRGINIA SURVEYS & GRANTS" AND THE "INDEX TO KENTUCKY SURVEYS & GRANTS AND TELlico SURVEYS & GRANTS" (published by the Kentucky Historical Society)

1. **KHS Vol. No.** Originally referred to the volume assignment after records preservation. As many of the volume numbers have changed, and the volume number does not apply to the on-line search, researchers should disregard this field.
2. **Original Survey No.** = Patent Number (Use this number for the "Sort by Patent" function on the "Virginia & Old Kentucky Patent Series" channel on the Kentucky Secretary of State's Land Office website.)
3. **Name:** The person(s) for whom the survey was made. May be an assignee of persons who acquired the warrant(s) authorizing the survey.
4. **Acresage**
5. **County:** The name of the county when the field survey was conducted. (This information is subject to change during the patenting process due to county formations.)
6. **Watercourse:** The name of the closest known watercourse when the field survey was conducted. The watercourse may not be located within the survey.
7. **Survey date:** The date the field survey was performed.
8. **Original Book & Page:** Refers to the Land Office Survey Book in which the survey was copied (by Land Office staff).
9. **Grantee:** The person(s) who took title to the land. May be an assignee of the person(s) for whom the survey was made. (Check the back of the Survey for handwritten assignments.) If the name of the grantee is the same as the name of the person(s) for whom the survey was conducted, the data field states "Same & Heirs". (The governor's

grant declares the land was conveyed to the "patentee and heirs" to indicate the land didn't revert to the Commonwealth at the death of the patentee. The wording does not imply, however, that the patent is still in family ownership. Deeds, wills, and court judgments must be researched to determine subsequent conveyances.)

10. **Grant Date:** The date the governor signed the Grant finalizing the patenting process.
11. **Original Book & Page:** Refers to the Land Office Grant Book in which the grant was copied (by Land Office staff). The printed Grant with the Governor's signature was issued to the patentee.

To research patents involving **Thomas Madison**, as listed on page 123 of the "Master Index: Virginia Surveys & Grants", two patents require a search by patent number, aka "Original Survey No." due to Madison's assignments to Patrick Henry (VA 2632) and Charles Patterson (VA 4850). Madison's signature may appear on the back of the survey for each of those patents. Notice other patents on the page cite the county location as Fincastle or Kentucky county; other patents cite the location as the Military District (reserved for Virginia's veterans of the Revolutionary War, their heirs or assignees). Information for VA 9409 stating the location was "Military & Jefferson" indicates the tract was located in Jefferson county and the patent was authorized by a warrant issued for service in the French & Indian War, Lord Dunmore's War, or other type of governor's warrant.

KY Agencies | KY Services | Search for

Kentucky.gov

LAND OFFICE
KENTUCKY SECRETARY OF STATE
Trey Grayson

Administrative Services | Business Services | Elections | Executive | Kentucky Land Office | Secretary's Desk
Kentucky Secretary of State > Kentucky Land Office > Non-Military Registers & Land Records > Virginia and Old Kentucky Patent Series

Virginia and Old Kentucky Patent Series

Names in the drop-box listings are limited to recipients of the Grant (Grantees); names are not cross-referenced. To expand the search, we suggest researchers access the Kentucky Historical Society publications "Master Index: Virginia Surveys & Grants" and "Index to Old Kentucky Surveys & Grants." Use numbers in the "Original Survey Number" field in both publications to access patents on this database. Patents for which duplicate numbers were issued, such as 5079 are viewed as 5079=1 and 5079=2 in Historical Society publications. For this database, the numbers will be depicted as 5079.1 and 5079.2.

- To obtain images for a specific series, first select the series in the first combobox.
- Next, select the desired patent from the second combobox.
- Finally, you may view printable versions by selecting the print quality desired, or you may download full sized images.

Note: The print quality is provided to accommodate users with slower connections. High quality images and full sized images are typically 1-5MB in size.

Series: Sort By:

Scanned Patents:

- VA 0432 0 | MADISON THOMAS
- VA 0433 0 | MCCORMACK DANIEL
- VA 0434 0 | LOGAN BENJAMIN
- VA 0435 0 | LOGAN BENJAMIN
- VA 0436 0 | LEVINS AARON
- VA 0437 0 | LOGAN WILLIAM
- VA 0438 0 | LEE JOHN
- VA 0439 0 | LOGAN WILLIAM
- VA 0440 0 | LOGAN HUGH
- VA 0491 0 | LEVINS JOHN & MAY RICH-RO
- VA 0492 0 | LOGAN BENJAMIN
- VA 0493 0 | LOGAN BENJAMIN
- VA 0494 0 | LOGAN JOHN
- VA 0495 0 | LOGAN JOHN
- VA 0496 0 | LOGAN JAMES
- VA 0497 0 | WILKINSON EVAN
- VA 0498 0 | KIRKLAND ANDREW
- VA 0499 0 | KENNEDY JOHN
- VA 0500 0 | KIRKLAND SAMUEL
- VA 0501 0 | KIRKLAND JOHN
- VA 0502 0 | KENNEDY JOHN
- VA 0503 0 | KENNEDY JOHN
- VA 0504 0 | KING
- VA 0505 0 | KEENE
- VA 0506 0 | KEENE
- VA 0507 0 | JACK
- VA 0508 0 | JACK
- VA 0509 0 | HELM
- VA 0510 0 | HARRO
- VA 0511 0 | HARPT

Kentucky.gov

KY Agencies | KY Services | Search for

Kentucky.gov

LAND OFFICE
KENTUCKY SECRETARY OF STATE
Trey Grayson

Administrative Services | Business Services | Elections | Executive | Kentucky Land Office | Secretary's Desk
Kentucky Secretary of State > Kentucky Land Office > Non-Military Registers & Land Records > Virginia and Old Kentucky Patent Series

Virginia and Old Kentucky Patent Series

Names in the drop-box listings are limited to recipients of the Grant (Grantees); names are not cross-referenced. To expand the search, we suggest researchers access the Kentucky Historical Society publications "Master Index: Virginia Surveys & Grants" and "Index to Old Kentucky Surveys & Grants." Use numbers in the "Original Survey Number" field in both publications to access patents on this database. Patents for which duplicate numbers were issued, such as 5079 are viewed as 5079.1 and 5079.2 in Historical Society publications. For this database, the numbers will be depicted as 5079.1 and 5079.2.

- To obtain images for a specific series, first select the series in the first combobox.
- Next, select the desired patent from the second combobox.
- Finally, you may view printable versions by selecting the print quality desired, or you may download full sized images.

Note: The print quality is provided to accommodate users with slower connections. High quality images and full sized images are typically 1-5MB in size.

Series: Sort By:

Scanned Patents:

- VA 6361 0 | MACCEN ELIZABETH (Hex of George Madden)
- VA 4165 0 | MADDOX DAVID
- VA 4550 0 | MADDOX THOMAS
- VA 6364 0 | MADISON AMBROSE
- VA 0423 0 | MADISON AMBROSE
- VA 0327 0 | MADISON AMBROSE
- VA 2236 0 | MADISON GABRIEL
- VA 0459 0 | MADISON GABRIEL
- VA 6407 0 | MADISON GABRIEL
- VA 4542 0 | MADISON GABRIEL & MAY WILLIAM
- VA 5342 0 | MADISON GEORGE
- VA 2255 0 | MADISON JAMES
- VA 3422 0 | MADISON JAMES
- VA 2721 0 | MADISON JAMES
- VA 2710 0 | MADISON JAMES
- VA 9009 0 | MADISON JAMES (Heis)
- VA 2225 0 | MADISON JOHN SR
- VA 1053 0 | MADISON REV JAMES
- VA 0015 0 | MADISON RONALD
- VA 7794 0 | MADISON SUSHINA & MADISON AGATHA STROTHER
- VA 9463 0 | MADISON SUSANNA SMITH & MADISON AGATHA STROTHER
- VA 2110 0 | MADISON SUSANNAH & MADISON AGATHA STROTHER (Hex of William Madison)
- VA 0482 0 | MADISON THOMAS
- VA 3654 0 | MADISON THOMAS
- VA 3971 0 | MADISON THOMAS
- VA 3947 0 | MADISON THOMAS
- VA 6405 0 | MADISON THOMAS
- VA 3940 0 | MADISON WILLIAM
- VA 6331 0 | MAGILL ARCHIBALD
- VA 9337 0 | MAJORS JOHN

Kentucky.gov

RESEARCHING THOMAS MADISON ON THE "VIRGINIA & OLD KENTUCKY PATENT SERIES" CHANNEL ON THE KENTUCKY SECRETARY OF STATE'S LAND OFFICE WEBSITE (<http://www.sos.ky.gov/land/ponmilitary/patentseries/vaky/>)

1. Select "Virginia Patent Series" and sort by "Name/Description". (Note: Search functions reset after each selection is made by the researcher.)
2. Five patents are listed for Thomas Madison; the surveys assigned by Thomas Madison are not included. Three of the listed patents were assigned to Madison by Patrick Henry; they will be listed in the "Master Index" under Patrick Henry's name.

Virginia and Old Kentucky Patent Series

Names in the drop-box listings are limited to recipients of the Grant (Grantees); names are not cross-referenced. To expand the search, we suggest researchers access the Kentucky Historical Society publications "Master Index: Virginia Surveys & Grants" and "Index to Old Kentucky Surveys & Grants." Use numbers in the "Original Survey Number" field in both publications to access patents on this database. Patents for which duplicate numbers were issued, such as 5079 are viewed as 5079#1 and 5079#2 in Historical Society publications. For this database, the numbers will be depicted as 5079.1 and 5079.2.

- To obtain images for a specific series, first select the series in the first combobox.
- Next, select the desired patent from the second combobox.
- Finally, you may view printable versions by selecting the print quality desired, or you may download full sized images.

Note: The print quality is provided to accommodate users with slower connections. High quality images and full sized images are typically 1-5MB in size.

Series: Sort By:

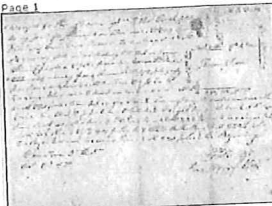
Scanned Patents:

Patent: VA 0482.0
Description: MADISON, THOMAS

[Advanced Image Viewer](#) | Or [Download entire document in Multipage TIFF Format. \(4.49 MB\).](#)

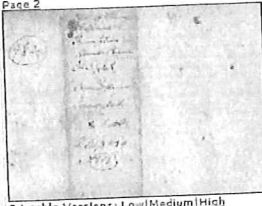
4 Pages

Page 1




Printable Versions: [Low](#) | [Medium](#) | [High](#)
[Download Full Sized Image](#)

Page 2




Printable Versions: [Low](#) | [Medium](#) | [High](#)
[Download Full Sized Image](#)

Page 3



Printable Versions: [Low](#) | [Medium](#) | [High](#)
[Download Full Sized Image](#)

Page 4



- Kentucky Land Office Home
- Kentucky Cities
- Military Registers & Land Records
- Non-Military Registers & Land Records
- Certificates of Settlement & Preemptions
- Virginia Treasury Warrants
- Lincoln County Entries
- Kentucky County Formations
- Jackson Purchase Land Locator
- Patent Series
- County Court Orders
- Land Office Order Form
- Database Searches
- Land Office Journal
- Reference Library



If the patent number has been determined (by accessing the "Master Index"):

1. Select "Virginia Patent Series" and sort by Patent Number.
2. Researchers must scroll through the listings to find Virginia (VA) patent numbers 0482.0, 3964.0, 3971.0, 3947.0, & 6406.0.
(Note: During indexing the patent numbers were assigned four-digit characters followed by a one-digit decimal field for ease in sorting and identification of patent files with duplicate patent numbers.)

Select an item to view images of patent files.

By opening Virginia Patent 0482.0 the following information is available: (1) the front of the field survey; (2) the back of the field survey; (3) & (4) the Land Office copy of the Grant issued to Thomas Madison. Documents may be viewed and printed in low, medium, or high resolution or downloaded in multipage TIFF format. Suggested research: (1) As this patent was authorized by Preemption Warrant 304, access the "Certificates of Settlement & Preemption Warrants" channel on the Land Office website for information regarding the Preemption Warrant; (2) As the watercourse for this patent may have been located

in old Lincoln county, access the "Lincoln County Entries" channel on the Land Office website. (Search by "Name" and "Search for" Madison Thomas. The Entry reserving the land for patenting stated the acreage was 1000 but apparently 924 acres was the total acreage available when the field survey was made. All other details of the Entry, such as type of warrant and warrant assignee match the Survey.) As no patent map was constructed when patents were issued, researchers must determine patent location. After viewing all patents involving Thomas Madison under "Virginia Patent Series", open "Old Kentucky Patent Series" and access Madison patents issued after 1792. Access the "Old Kentucky Surveys & Grants" index to determine if Madison had surveys conducted but wasn't the patentee.

access additional information under the “Caveats,” “Frequently Asked Questions,” “Printing Tips,” and “Sample Patents,” “Unfinished Patents,” and “Unused Warrants” channels.

2. The “Virginia Patent Series & Old Kentucky Patent Series” website is also available by opening “Database Searches” on the Land Office home page or <http://www.sos.ky.gov/land/search/>. This site is a direct link to the various online searches.

At this time the Land Office does not have a searchable database for the “Virginia Patents Series & Old Kentucky Patents Series” website. Researchers are viewing the scanning index for each series while the database with enhanced information is under construction. To use the site in its present format:

- Open the “Select a Series” box then choose “Virginia Patent Series” or “Old Kentucky Patent Series.” The page will reset for the selected series.
- Although the sort field defaults to “Patent” number, the files can be arranged alphabetically by grantee name by opening the “Sort By” box and clicking “Name/Description.” (Note: Patent numbers can be determined by accessing two blue books published by the Kentucky Historical Society, “Master Index to Virginia Surveys & Grants” and “Index to Old Kentucky Surveys & Grants and Tellico Surveys & Grants.” Both books are indexed by the name of the person(s) for whom the survey was made thus doubling the number of names that can be researched.) The “Name/Description” search yields the names of grantees who took title to land patents. Researchers are reminded the Grantor for all patents is the government, i.e. Virginia prior to Kentucky’s statehood in 1792 (Virginia Patent Series) or the Commonwealth of Kentucky (Old Kentucky Patent Series) after our statehood. Grants are signed by the governors of the respective states. Scans of grants issued by Patrick Henry and Thomas Jefferson are available in the “Virginia Patent Series” online collection.
- After the patent series and sort functions are selected, click inside the box labeled “Scanned Patents,” then highlight the patent file you want to open. Note: As this is a scanning index rather than a searchable database, all patents in the

patent series are listed in patent number sequence or alphabetically by grantee. Slide the bar at the right side of the box to scroll through the patent listings.

- After a patent is highlighted, the screen will populate with images from the patent file. Download time is dependent upon the speed of your computer or the size of the requested file. (Many of the files are quite large due to the number of warrants and other documents filed with the survey and grant.)
- All documents appear in preview or thumbnail panes making it easier for researchers to access specific images such as surveys.
- The labels “Low,” “Medium,” and “High” describe the resolution or clarity of the document. Documents download faster with the “Low” setting but they are easier to read with the “High” resolution option.
- Documents may be printed directly from the preview pane. Be sure to adjust your printer to a landscape or portrait setting. As the documents are color scanned, we recommend a color printer for optimal printing results. See “Printing Tips” on the “Virginia Patent Series & Old Kentucky Patent Series” channel for additional printing suggestions.
- The “Advanced Image Viewer” allows researchers to see the documents in our traditional format. Documents can be resized to enlarge that troublesome survey call, date, or name. Be sure to click “Hide All Options” before printing.
- At the request of our researchers, documents can be downloaded in multi-page TIFF format.

It is an accepted fact that genealogists and historians are amateur detectives. We love research that leads to more resources—both online and in repositories. Images from the “Virginia Patent Series & Old Kentucky Patent Series” patent files open a variety of research possibilities. For example:

- If the requested patent was authorized by a Preemption Warrant or Certificate of Settlement, access the “Certificates of Settlement & Preemption Warrants” channel on the Secretary of State’s Land Office website at <http://www.sos.ky.gov/land/nonmilitary/settlements/>. You will find a link to the scanned image of the certificate

issued by the Land Commission and other papers such as the receipt for the Warrant and, possibly, the printed Preemption Warrant form. Signatures on assignments on the back of the documents may prove helpful to your research.

- If the requested patent was authorized by a Treasury Warrant, access the “Virginia Treasury Warrants” channel on the Secretary of State’s Land Office website at <http://www.sos.ky.gov/land/nonmilitary/virginia/>. You will find information regarding the purchase of the Treasury Warrant, as it was recorded in the “Treasury Warrants Register,” and links to other patents authorized by the Treasury Warrant.
- If the requested patent was authorized by a warrant issued to a Virginia veteran, heir, or assignee for service in the Revolutionary War, open the Revolutionary War Warrants” channel on the Secretary of State’s Land Office website at <http://www.sos.ky.gov/land/military/revwar/> and determine the name of the veteran who actually received the right to patent land in the Virginia Military Districts in Kentucky or Ohio. Researchers can also see the scanned image of the Military Warrant from the “Warrants Register.” (The availability of the entry from the “Warrants Register” is particularly helpful if the printed form issued to the veteran is missing from the patent file.)
- If the location of the requested patent was identified as Lincoln County, open the “Lincoln County Entries” channel on the Secretary of State’s Land Office website at <http://www.sos.ky.gov/land/nonmilitary/lincoln/> and view the scanned image of the Entry reserving the land for patenting if it is available.
- Use the online “Gazetteer” channel on the Secretary of State’s Land Office Reference Library website at <http://apps.sos.ky.gov/land/reference/gazetteer.asp> to determine the county location for watercourses cited in the Virginia or Old Kentucky Patent Series survey descriptions. This is particularly helpful for patents within the Revolutionary War Military District; county location is usually omitted from those survey descriptions. (Note: The Gazetteer stays under construction. As additional watercourses and locations are identified, they are added to the database.)
- When a county is determined, access the “County Court Order Patent Series Database” on the Secretary of State’s Land Office website at <http://apps.sos.ky.gov/land/nonmilitary/patentseries/cocourtorders/>. Open the “Advanced Search” function. Open the “Search by” box, select “county,” and then type in the county name. Mark the “Search within these results” box, and then search by watercourse. You will find the names of grantees from 1835 to current date who patented land on the watercourse cited in the Virginia or Old Kentucky patent. Some of the grantees may be descendants or family members of the individual receiving the earlier land patent.
- Researchers who are interested in the legislative structure of Virginia or Old Kentucky patents can open the “Legislation” channel on the Secretary of State’s Land Office Reference Library website at <http://www.sos.ky.gov/land/reference/legislation/> to read proclamations issued by King George III regarding bounty land warrants issued to French & Indian War veterans and other land laws affecting early Kentucky settlers.
- To research subsequent conveyances of all Kentucky patents, access deeds, wills, and court records filed on the local level with the county clerk. Many local records are also available at the Kentucky History Center Library and the Kentucky Department for Libraries and Archives. Be sure to initiate your search by accessing records for the county location cited in the Grant. For example, to research Boyle County Deeds, you will need to access Mercer County records between 1786 and 1842 when Boyle County was formed. To research the same land prior to 1786, Lincoln County Deeds must be researched. County formation dates and names of mother counties are listed in the Secretary of State’s Land Office Reference Library website at <http://www.sos.ky.gov/land/reference/landtable.htm>.
- Not every settler in Kentucky acquired land under a patent. Many individuals purchased or inherited land; others occupied land as tenants. Researchers are encouraged to study census records to determine ancestors’ county of residence. Once the county has been identified, access Tax Lists for additional information regarding land ownership. On the Tax Lists from 1795 to the mid-1830s, taxpayers had to identify

the names of persons involved in the original patent for their property. Check the “Entered by,” “Surveyed for,” and “Patented or Granted to” columns on the tax lists. The Kentucky Historical Society publications mentioned earlier in this article assist in determining which Virginia or Old Kentucky patent number should be accessed by matching county and watercourse information. This is particularly helpful when researching the numerous May-Bannister patents. If the books are not available, sort the names alphabetically on the “Virginia Patent Series & Old Kentucky Patent Series” website then open the preview panes to find a patent that seems to match the county and location on the tax list. Tax Lists are available at the Martin F. Schmidt Research Library at the Kentucky Historical Society (Frankfort), Kentucky Department for Libraries & Archives (Frankfort), Church of Latter Day Saints libraries, and many local libraries and research facilities. For additional information regarding the importance of tax list research, open <http://www.sos.ky.gov/land/reference/taxlists.htm> on the Kentucky Secretary of State’s Land Office website.

Although we cannot hear your “oohs and ahs” when you see the first document in a patent file that applies to your family, it is easy for us to imagine your reaction. Undoubtedly there are squeals of delight and “Come see this...right now!” exclamations. (We can also imagine how difficult it is to wait for the large image files to download; we appreciate your patience.) We speak for Secretary of State Trey Grayson, and the Secretaries who have supported the Land Office records preservation project since the 1970s, as well as the Land Office staff of indexers and scanning specialists when we thank you for visiting the Kentucky Secretary of State’s Land Office website. We hope you find information that will help you document your family history and, thusly, the history of this great commonwealth.

We would be remiss, however, if we did not remind researchers that the online images of patent files are not the “be-all, end-all” of available records. For example, once title has been established under a patent, how long did the tract stay under the patentee’s ownership? Did the patentee reside in the county and own other properties? Did he or

she bequeath the property in a will or is the tract mentioned in a court judgment? Is it possible to plot the survey calls and determine where the land is located? Are there other patent series and images that are not available online at this time? Kentucky has outstanding staff members in libraries and research facilities on the local and state levels who can guide genealogists and historians through the next steps in documenting family history and land title. Patent files are not the end of the search; patent files are the beginning.

With an awareness of land patent files and the patenting process, perhaps it is time to plan a research expedition to Kentucky’s state and local libraries. There are many family files, county and state records that await even more of your “oohs and ahs.”

Next article in this series: “*Biographies of Kentucky’s Secretaries of State and the Land Office Reference Library*”

Subjects covered in previous issues of *Kentucky Ancestors*:

“The Kentucky Secretary of State’s Land Office Revolutionary War Warrants Database” (Autumn 2007)

“The Kentucky Secretary of State’s Land Office Certificates of Settlement and Preemption Warrants Database” (Winter 2007)

“The Kentucky Secretary of State’s Land Office Lincoln Entries Database” (Spring 2008)

“The Kentucky Secretary of State’s Land Office Jackson Purchase Database” (Summer 2008)

“The Kentucky Secretary of State’s Land Office County Court Orders Database” (Autumn 2008)